



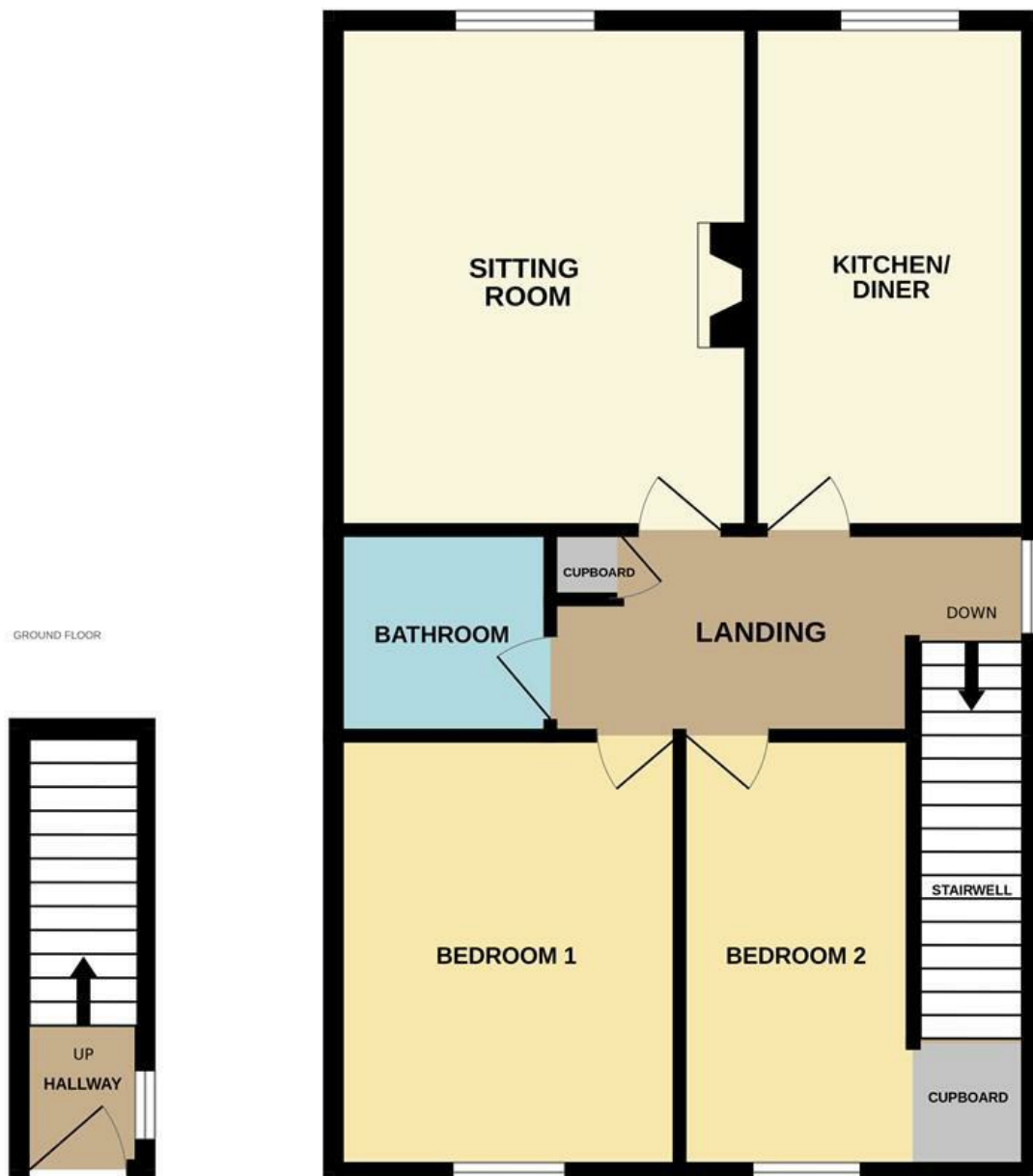
## 5 Fen Court, Lowestoft, Suffolk, NR33 9PX

Tucked away in a cul de sac in the heart of South Lowestoft, close to local amenities is this ideal 2 bedroom, first floor apartment, boasting an allocated off road parking space, sizeable sitting room and kitchen/diner!

- Two double bedrooms
- First floor apartment
- Situated within a cul de sac
- Modern bathroom
- Allocated off road parking
- Popular location
- EPC rating: C76
- Available from 5th December
- Close to local amenities
- Viewings by appointment only 27/11/2025

**£750 Per Calendar Month**

GROUND FLOOR



Whilst every attempt has been made to ensure the accuracy of the floorplan contained here, measurements of doors, windows, rooms and any other items are approximate and no responsibility is taken for any error, omission or mis-statement. This plan is for illustrative purposes only and should be used as such by any prospective purchaser. The services, systems and appliances shown have not been tested and no guarantee as to their operability or efficiency can be given.  
Made with Metropix ©2025

Energy Efficiency Rating		
	Current	Potential
Very energy efficient - lower running costs		
(92 plus) A		
(81-91) B		
(69-80) C	76	77
(55-68) D		
(39-54) E		
(21-38) F		
(1-20) G		
Not energy efficient - higher running costs		
England & Wales	EU Directive 2002/91/EC	